



AQUATIC SCIENCE

**NATURAL
WATER TREATMENT
& FOOD FOR
ORNAMENTAL FISH**

Enjoy your pond.

We take good care of it, sustainably.



AQUATIC SCIENCE



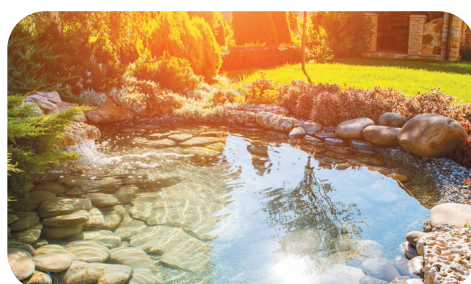
Measure water parameters

Water analysis desk	8
Spin touch	9
Aqualyser	9



Treating water

Step 1 : Mineralise	12
Step 2 : Clean	16
Step 3 : Maintain	18



Feeding ornamental fish

All Seasons	24
Vitality Plus	25
Excellent Color	26
Champion Growth	27
Wheat Germ Floating	28
Wheat Germ Sinking	29
Sinking	30



Measure water parameters

- ▶ Water analysis desk : guide your customers
- ▶ Spin Touch : test the water
- ▶ 'Aqualyser' App : access the data



AQUATIC SCIENCE

WATER ANALYSIS DESK

GUIDE YOUR CUSTOMERS



Consult the precise results and recommended treatment products directly on the tablet provided.

The Aquatic Science water analysis desk makes analysing your pond water child's play! The digital tester performs all the water analyses your pond needs: pH, alkalinity, total hardness, phosphates, ammonia, nitrites and nitrates.

The results are then sent to the tablet, which analyses the parameters obtained and advises you on the appropriate treatment. Thanks to our range of Aquatic Science treatment products, your pond will have perfectly balanced water.

**Spin Touch +
'Aqualyser' Application**



INSTRUCTIONS

1. Using the syringe, fill the analysis disc with water from your pond
2. Place the disc in the digital tester
3. Close the lid and press start
4. The results are sent directly to the tablet
5. Enter your email address to receive your analyses

REF.	ARTICLE	SIZE
ICPDCA01	Complete analysis desk	106 x 64 x 152 cm
ICPDCA01	Portable analysis desk	



SPIN TOUCH

TEST THE WATER

Test water samples quickly and accurately in-store or at your customers' homes.

The ultimate freshwater and saltwater analyser for all your aquatic applications.
The innovative WaterLink® Spin Touch®FF photometer performs all your water tests for you.

Each sealed reagent disc contains the precise amount of reagent needed to perform a complete series of tests. Discs are available for both freshwater and saltwater. Simply fill a single Spin reagent disc with less than 3 ml of water and all your tests are automatically performed in just 2 minutes! It's the fastest, simplest and most reliable measurement system on the market!



REF.	ARTICLE
KIASPT003B	SpinTouch
KIASPT003E	Kit of 50 discs FX104 (Freshwater)
KIASPT103E	Kit of 50 discs FX203 (Seawater)

	FRESHWATER (FX104)	SEAWATER (FX203)
Alkalinity (°KH)	0-14 °D	0-20 °D
Ammonia	0-4.0 mg/l	0-4.0 mg/l
Hardness (°GH)	0-30 °D	—
Calcium	—	200-800 mg/l
Magnesium	—	500-2200 mg/l
Nitrate	0-250 mg/l	0-60 mg/l
Nitrite	0-2.0 mg/l	0-2.0 mg/l
pH	4.5-10.0 pH	6.5-10.0 pH
Phosphate	0-2.0 mg/l	0-2.0 mg/l

'AQUALYSER'® APP

ACCESS THE DATA

Easily access and share analysis data.

Aqualyser is a free software package for interpreting water parameters, so you can manage pond and bathing water properly. Our intelligent app identifies potential imbalances, offers a precise diagnosis, recommends appropriate treatments and provides personalised advice to maintain healthy, balanced water.

Aqualyser offers a number of advantages, including:

- ▶ Detailed scientific information on the data analysed;
- ▶ Management of an infinite number of ponds;
- ▶ Complete data history;
- ▶ Graphs and tables;
- ▶ Personalised advice.





Treating water

- Step 1** ▶ MINERALISE
- Step 2** ▶ CLEAN
- Step 3** ▶ MAINTAIN



AQUATIC SCIENCE

STEP 1 MINERALISE



NEW

MAXI CLAY 90%

12.5g = 1m³

THE USE OF CLAY BENEFITS BOTH THE POND AND THE FISH

- ▶ Clay contributes to the mineralisation of pond water, as it contains many essential minerals as well as trace elements and coenzymes.
- ▶ Clay is a water purifier with a powerful detoxifying effect. It has a binding and absorbing capacity, allowing it to absorb the remains of medical treatments, heavy metals and even organic waste.
- ▶ For fish: using clay has a positive impact on colour, helps optimise oxygen transport and detoxify the blood, facilitates digestion, supports fish growth...

Aquatic Science Maxi Clay 90% is a clay known for its excellent solubility, purity (90% Montmorillonite) and exceptional fineness, making it perfectly compatible with drum filters.

Maxi Clay 90% can be used directly in the pond after dilution in a bucket of lukewarm water.

Dosage: 12.5g of Maxi Clay 90% per 1,000l of pond water, repeat every 2 weeks.

REF.	ARTICLE	QUANTITY/PACK
MAXCL1	Maxi Clay 1kg	6
MAXCL3	Maxi Clay 3kg	1
MAXCL7	Maxi Clay 7kg	1

GH +

25g = 1m³

INCREASES WATER GH (OVERALL HARDNESS)

An optimum GH is between 10 and 20°dH. Rainwater lowers the GH. A value that is too low is detrimental to filtration and the growth of plants and fish. Check the GH regularly, especially after heavy rain and in dry periods. Correct if necessary. Contains a mineral extract naturally rich in trace elements.

- ▶ Formulated with mineral salts and trace elements.
- ▶ Helps to mineralise sludge.
- ▶ Supports bacteria and improves biological filtration.
- ▶ Precipitates phosphates and makes water clearer.

REF.	ARTICLE	QUANTITY/PACK
NEOGHP400B	GH+ 400g	12
NEOGHP001B	GH+ 1kg	6
NEOGHP005B	GH+ 5kg	1
NEOGHP015B	GH+ 15kg	1



KH +

25g = 1m³

INCREASES THE KH OF THE WATER (CARBONATE HARDNESS)

Optimum KH is between 8 and 12°dH. Rainwater lowers the KH. A value that is too low is detrimental to filtration and the growth of plants and fish. Check the KH regularly, especially after heavy rain and in dry periods. Correct if necessary. Contains a mineral extract naturally rich in trace elements.

- ▶ Formulated with mineral salts and trace elements.
- ▶ Regulates the pH and the ecosystem in general.
- ▶ Helps to mineralise sludge.
- ▶ Supports bacteria and improves biological filtration.
- ▶ Precipitates phosphates and makes water clearer.

REF.	ARTICLE	QUANTITY/PACK
NEOKHP400B	KH+ 400g	12
NEOKHP001B	KH+ 1kg	6
NEOKHP005B	KH+ 5kg	1
NEOKHP015B	KH+ 15kg	1



pH-

25g = 1m³

LOWERS WATER PH

If the pH is too high, it may become impossible to adjust water hardness levels, as minerals may no longer dissolve or may even precipitate out. A pH- treatment can be a necessary and highly effective tool to restore the mineral balance of your water.

Use before introducing GH/KH/Optiminera if your pH is above 8.2. One measuring spoon per m³ reduces the pH by 1 to 2 units for 24 to 48 hours. To stabilise your pH, remember to check that your KH is at least greater than 6.

REF.	ARTICLE	QUANTITY/PACK
NEOPHM400B	pH- 400g	12
NEOPHM001B	pH- 1kg	6
NEOPHM005B	pH- 5kg	1



OPTIMINERA

25g = 5m³

MINERAL BALANCE

Ideal for small volumes of water. Optiminera increases and stabilises pH, GH and KH. Rich in natural minerals and trace elements, Optiminera's natural minerals optimise pH and hardness over the long term. Optiminera helps clarify water, reduces phosphate levels, accelerates silt reduction and supports overall pond stability (disease prevention).

1 kg will maintain the mineral balance and pH of a 20m³ pond throughout the season.

REF.	ARTICLE	QUANTITY/PACK
NEOMIN006B	Optiminera 5000	12
NEOMIN010B	Optiminera 10000	12
NEOMIN020B	Optiminera 20000	6





STEP 2 CLEAN



BIOBOOSTER+

60g = 1m³

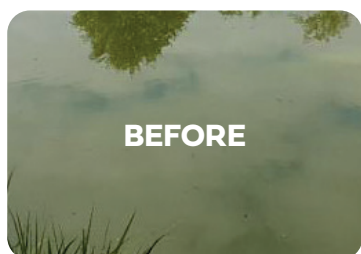
THE POND CLEANER

Biobooster+ is a formulation designed to boost the activity of beneficial microorganisms in the pond. The effect on organic waste is visible after just a few hours.

Biobooster+ will then enhance the development of bacteria, leading to the elimination of waste. It contains no harmful substances for filtration, the environment or the fish, which are all the more vigorous and healthy as a result.

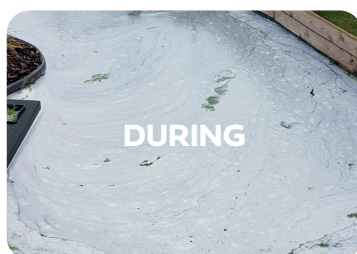
In the long term, the combined use of Biobooster+ and Bactogen with our high-quality Aquatic Science fish food significantly reduces the organic pollution responsible for siltation, filter clogging and the build-up of ammonia, which is toxic to fish.

REF.	ARTICLE	QUANTITY/PACK
NEOBBP003B	Biobooster+ 3000	12
NEOBBP006B	Biobooster+ 6000	12
NEOBBP012B	Biobooster+ 12000	6
NEOBBP024B	Biobooster+ 24000	6
NEOBBP040B	Biobooster+ 40000	1
NEOBBP200B	Biobooster+ 200 m ³	1
NEOBBP500B	Biobooster+ 500 m ³	1



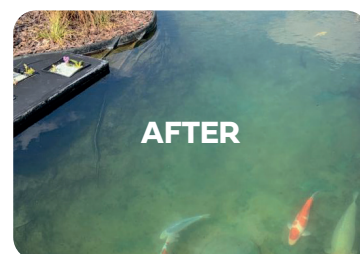
BEFORE

If algae or a eutrophic environment is present, you need to intervene and **and clean your pond thoroughly**. This is the only way to restart a virtuous biological cycle.



DURING

Spreading Biobooster+ over the surface of your pond will clean it in just a few minutes, as **the mechanical action lifts certain organic waste to the surface**.



AFTER

After 10 to 15 minutes, **the surface should be skimmed manually or with a skimmer** to remove any organic waste that has risen to the surface.

Water quality will continue to improve in the following days thanks to **aeration of the silt, which boosts its natural bacterial digestion**.

BIO CLEAR

10ml = 1m³

MULTI-ACTION FLOCCULANT

Bio Clear quickly clarifies cloudy water (brown, green or milky) and reduces biofilm on surfaces by pre-digesting nutrients thanks to its enzymatic action and by permanently binding suspended particles. The aggregates formed are effectively captured by the filter, giving the pond a crystalline appearance. Harmless to flora and fauna.

- ▶ Eliminates impurities and suspended matter.
- ▶ Optimises mechanical filtration, clarifies water.
- ▶ Ideal in combination with Bactogen.

REF.	ARTICLE	QUANTITY/PACK
NEOBIOCL005E	Bio Clear 500ml	6



ANTI PHOSPHATE

20ml = 1m³

REDUCES PHOSPHATE LEVELS

Phosphate promotes the growth of filamentous algae and green water. Anti-Phosphate helps to obtain clear water, reduce algae and improve filtration performance over time.

- ▶ Removes phosphate from water.
- ▶ Stops algae growth.
- ▶ Reduces the frequency of filtration maintenance.

Curative dosage: 20ml/m³ captures 3 mg/l of PO₄.

Preventive dosage: 10 ml/m³ per week.

If a drum filter is used, spread the dosage evenly over 5 days.

REF.	ARTICLE	QUANTITY/PACK
NEOANP500B	Anti Phosphate 500ml	12
NEOANP001B	Anti Phosphate 1l	6



STEP 3 MAINTAIN



BACTOGEN

25g = 5m³

MAINTENANCE OF BIOLOGICAL FILTRATION

A concentrated blend of bacteria, minerals and trace elements, Bactogen is recommended for biological filtration maintenance throughout most of the year.

Bactogen improves biological water quality and supports the purification cycle of organic pollutants. In the long term, the combined use of Biobooster+ and Bactogen with our high-quality Aquatic Science fish food significantly reduces the organic pollution responsible for siltation, filter clogging and the build-up of ammonia, which is toxic to fish.

REF.	ARTICLE	QUANTITY/PACK
NEOBAC003B	Bactogen 3000	12
NEOBAC006B	Bactogen 6000	12
NEOBAC012B	Bactogen 12000	12
NEOBAC024B	Bactogen 24000	6
NEOBAC040B	Bactogen 40000	6
NEOBAC200B	Bactogen 200 m ³	1
NEOBAC500B	Bactogen 500 m ³	1

OPTINIT

15g = 1m³

STARTING BIOLOGICAL FILTRATION

Optinit contains all the bacterial strains and minerals needed to start or restart biological filtration.

Optinit should be used at the start of filtration (spring, new pond, etc.), after maintenance, a change of media in a filter, a treatment or a replacement of water, as soon as the water temperature exceeds 10°C. Spread directly in the filter and on the surface of the pond where water circulation is optimal. Turn off the UV for three days. Make sure the water is properly oxygenated. Use Bactogen for filtration maintenance.

REF.	ARTICLE	QUANTITY/PACK
NEONIT012B	Optinit 12000	12
NEONIT024B	Optinit 24000	6
NEONIT040B	Optinit 40000	6



BACTOPOOL

25g = 10m³

MAINTENANCE OF BIOLOGICAL FILTRATION IN NATURAL SWIMMING POOLS

Bactopool is a combination of minerals, oxides and natural germs specially selected for their purifying properties. It helps maintain ideal bathing water throughout the season.

Bactopool should be administered every three to four weeks. It may be necessary to increase the frequency in the event of excessive rain or abnormal pollution. For initial sowing, turn off the UV for 24 hours. There is no need to turn off the UV during maintenance.

Highly effective against phosphates.

REF.	ARTICLE	QUANTITY/PACK
NEOPBA005B	Bactopool 5kg	1
NEOPBA010B	Bactopool 10kg	1



CLEAN LAC

12 kg = 800 m²

PREPARATION FOR PONDS BASED ON NATURAL GERMS, MINERALS AND TRACE ELEMENTS

Clean Lac is a formulation designed to improve water quality when the volume is too large to be filtered.

Clean Lac is characterised by a specific bacterial formulation – bacterial strains isolated and validated in collaboration with a specialist research centre – that targets two types of pollution: nitrate and phosphate.

Spread the powder over the surface of the water, preferably in combination with an oxygenator.

REF.	ARTICLE	QUANTITY/PACK
NEOCLP030B	Clean Lac 25m ²	12
NEOCLP300B	Clean Lac 250m ²	1
NEOCLP008B	Clean Lac 800m ²	1



PRODUCT COMPLIES WITH STANDARD 2000/54/CE

OXY-GEN VITAL

40g = 5m³

INCREASES O₂ LEVELS

Oxy-gen Vital rapidly increases the oxygen level in the pond, with visible effects in just a few minutes.

It fosters the natural elimination of silt and accelerates the algae control process. It increases the 'redox potential', thereby improving filtration, and also prevents and treats fish asphyxia.

REF.	ARTICLE	QUANTITY/PACK
NEOOXY012B	Oxy-gen Vital 12000	12



NEW

LACTOPOND HEALTH

2g = 1m³

FORMULATION CONTAINING LACTIC ACID BACTERIA FOR FISH CARE AND POND BALANCE

Aquatic Science Lactopond Health is indicated to combat bacterial infections caused by pathogenic bacteria. It also promotes the healing of fish wounds and other injuries.

Regular use of Lactopond Health significantly improves the intestinal function of fish.

Dosage: once the water temperature is above 12°C, spread 2g of Lactopond Health per 1,000l over the pond water once a month.

REF.	ARTICLE	QUANTITY/PACK
NEOLACTO80	Lactopond Health 80g	12
NEOLACTO150	Lactopond Health 150g	12
NEOLACTO350	Lactopond Health 350g	12



DUO PACK

100%



REF.	ARTICLE	QUANTITY/PACK
ICDUPA3000	Duo Pack 3000	4
ICDUPA6000	Duo Pack 6000	4
ICDUPA12000	Duo Pack 12000	3
ICDUPA24000	Duo Pack 24000	3





Feeding ornamental fish

Aquatic Science offers you a complete range of premium-quality foods for ornamental fish. Made in Europe from sustainable raw materials, they are formulated to guarantee optimum health, digestibility, vitality and well-being.



AQUATIC SCIENCE



AQUATIC SCIENCE



ALL SEASONS

VITALITY PLUS

EXCELLENT COLOR

Growth	●●○○○	●●●○○	●●●●○
Digestion	●●●●●	●●●●●	●●●●●
Immunity	●●○○○	●●●●○	●●●●○
Colours	●○○○○	●●●○○	●●●●○
Temperature	Min. 10°	Min. 12°	Min. 16°
Floating	90%	90%	90%
Sinking	10%	10%	10%
Probiotics	—	✓	✓



Recipe: top-quality ingredients



Optimum scientific formulation



CHAMPION GROWTH

WHEAT GERM FLOATING

WHEAT GERM SINKING

SINKING

● ● ● ● ●

● ● ● ● ●

● ● ● ● ●

● ● ● ● ●

● ● ● ● ●

● ● ● ● ●

● ● ● ● ●

● ● ● ● ●

● ● ● ● ●

● ● ● ● ●

● ● ● ● ●

● ● ● ● ●

● ● ● ● ●

● ● ● ● ●

● ● ● ● ●

● ● ● ● ●

Min. 16°

Min. 5°

Min. 5°

—

100%

100%

—

—

—

—

100%

100%



—

—

—



Maintains water clarity



Optimum scientific formulation for the well-being of your fish



AQUATIC SCIENCE

ALL SEASONS



The ideal,
year-round staple food
for all pond fish.

- ✓ DIGESTIBILITY
- ✓ ALL FISH
- ✓ YEAR-ROUND

90%

FLOATING

10%

SINKING

MIN. 10°C

All Seasons by Aquatic Science is a complete staple food for ornamental fish, specially adapted to ensure balanced growth and greater resistance to disease. Our complete Aquatic Science range offers feed adapted to the specific needs of your fish.



INSTRUCTIONS

It is preferable to feed several small meals a day.
Contains fish meal. Do not feed to ruminants or any other animal species.

COMPOSITION

Cereal products and by-products, oilseed products and by-products, fish meal, fish oil, seaweed, minerals.

Vitamin A (E672)	min. 8400 UI/kg
Vitamin D3 (E671)	min. 1470 UI/kg
Vitamin E (3a700)	min. 183 mg/kg
Vitamin C (3a312)	min. 235 mg/kg

Crude protein	33.5%
Crude	8.9%
Crude cellulose	4.1 %
Min.eral materials	8.6%
Calcium	1.1%
Total phosphorus	0.99%
Sodium	0.17%

Packaging

REF.	ARTICLE	
ASALLS2	Aquatic Science All Seasons SMALL	2kg
ASALLS5	Aquatic Science All Seasons SMALL	5kg
ASALLM05	Aquatic Science All Seasons MEDIUM	0.5kg
ASALLM2	Aquatic Science All Seasons MEDIUM	2kg
ASALLM5	Aquatic Science All Seasons MEDIUM	5kg
ASALLM95	Aquatic Science All Seasons MEDIUM	9.5kg
ASALLL2	Aquatic Science All Seasons LARGE	2kg
ASALLL5	Aquatic Science All Seasons LARGE	5kg
ASALLL95	Aquatic Science All Seasons LARGE	9.5kg

The koi food that promotes harmonious development

VITALITY PLUS


CONTAINS PROBIOTICS
✓ IMMUNITY
✓ VITALITY
90%

FLOATING

10%

SINKING


 MIN. 12°C


Aquatic Science Vitality Plus is a high-quality complete food for ornamental fish. Highly nutritious and easily digestible, it is used by koi breeders, who appreciate its performance in terms of growth, colour and vitality.

Vitamin A (E672)	min. 9200 UI/kg
Vitamin D3 (E671)	min. 1600 UI/kg
Vitamin E (3a700)	min. 229 mg/kg
Vitamin C (3a312)	min. 405 mg/kg

Crude protein	36.5%
Crude	8.7%
Crude cellulose	3.7%
Min.eral materials	9.1%
Calcium	1.3%
Total phosphorus	1.15%
Sodium	0.26%

INSTRUCTIONS

It is preferable to feed several small meals a day.
Contains fish meal. Do not feed to ruminants or any other animal species.

COMPOSITION

Cereal products and by-products, oilseed products and by-products, fish meal, fish oil, seaweed, minerals, immunostimulants (including probiotics).

Packaging

REF.	ARTICLE	
ASVPS2	Aquatic Science Vitality Plus SMALL	2kg
ASVPS5	Aquatic Science Vitality Plus SMALL	5kg
ASVPM05	Aquatic Science Vitality Plus MEDIUM	0.5 kg
ASVPM2	Aquatic Science Vitality Plus MEDIUM	2kg
ASVPM5	Aquatic Science Vitality Plus MEDIUM	5kg
ASVPM95	Aquatic Science Vitality Plus MEDIUM	9.5kg
ASVPL2	Aquatic Science Vitality Plus LARGE	2kg
ASVPL5	Aquatic Science Vitality Plus LARGE	5kg
ASVPL95	Aquatic Science Vitality Plus LARGE	9.5kg



AQUATIC SCIENCE

EXCELLENT COLOR

The premium complete food
for koi that boosts colour
and immunity

CONTAINS PROBIOTICS

- ✓ IMMUNITY
- ✓ DIGESTIBILITY
- ✓ COLOURS

90%

FLOATING

10%

SINKING

MIN. 16°C

Excellent Color from Aquatic Science is a premium complete food for ornamental fish. It is formulated to improve fish performance. Recommended during warmer periods (>16°C) when fish metabolism is highest. It can also be used during the breeding season, following treatment or illness, as well as in preparation for a competition to enhance the colours of the koi.

INSTRUCTIONS

It is preferable to feed several small meals a day.
Contains fish meal. Do not feed to ruminants or any other animal species.

COMPOSITION

Cereal products and by-products, oilseed products and by-products, fish meal, fish oil, seaweed, minerals, immunostimulants (including probiotics).



Vitamin A (E672)	min.10000 UI/kg
Vitamin D3 (E671)	min. 1750 UI/kg
Vitamin E (3a700)	min. 275 mg/kg
Vitamin C (3a312)	min. 575 mg/kg

Crude protein	39.5%
Crude	8.5%
Crude cellulose	3.2%
Min.eral materials	9.6%
Calcium	1.5%
Total phosphorus	1.3%
Sodium	0.35%

Packaging

REF.	ARTICLE	
ASECS2	Aquatic Science Excellent Color SMALL	2kg
ASECS5	Aquatic Science Excellent Color SMALL	5kg
ASECM05	Aquatic Science Excellent Color MEDIUM	0.5kg
ASECM2	Aquatic Science Excellent Color MEDIUM	2kg
ASECM5	Aquatic Science Excellent Color MEDIUM	5kg
ASECM95	Aquatic Science Excellent Color MEDIUM	9.5kg
ASECL2	Aquatic Science Excellent Color LARGE	2kg
ASECL5	Aquatic Science Excellent Color LARGE	5kg
ASECL95	Aquatic Science Excellent Color LARGE	9.5kg



AQUATIC SCIENCE

CHAMPION GROWTH

The top-of-the-range complete food for champions that boosts growth, colour and immunity



CONTAINS PROBIOTICS

- ✓ IMMUNITY
- ✓ DIGESTIBILITY
- ✓ COLOURS
- ✓ GROWTH

100%

FLOATING

0%

SINKING



MIN. 16°C



Premium complete food for koi, optimised for healthy, rapid growth while developing a muscular body and intense colours. Made from high-quality raw materials guaranteeing optimal assimilation and performance, Champion Growth is rich in high-quality proteins, immunostimulants and natural pigments. A high level of asthaxanthin effectively combats oxidative stress. Champion Growth also contains bentonite and sepiolite to regulate intestinal transit and improve digestion.

Vitamin A (E672)	min. 12000 UI/kg
Vitamin D3 (E671)	min. 2100 UI/kg
Vitamin E (3a700)	min. 390 mg/kg
Vitamin C (3a312)	min. 1000 mg/kg

Crude protein	47%
Crude	8%
Crude cellulose	1.9%
Min.eral materials	10.8%
Calcium	2.1%
Total phosphorus	1.7%
Sodium	0.6%

INSTRUCTIONS

It is preferable to feed several small meals a day. Contains fish meal. Do not feed to ruminants or any other animal species.

COMPOSITION

Cereal products and by-products, oilseed products and by-products, fish meal, fish oil, seaweed, minerals, immunostimulants (including probiotics).

Packaging

REF.	ARTICLE	
ASCGM05	Aquatic Science Champion Growth MEDIUM	0.5kg
ASCGM2	Aquatic Science Champion Growth MEDIUM	2kg
ASCGM5	Aquatic Science Champion Growth MEDIUM	5kg
ASCGM95	Aquatic Science Champion Growth MEDIUM	9.5kg
ASGCL2	Aquatic Science Champion Growth LARGE	2kg
ASGCL5	Aquatic Science Champion Growth LARGE	5kg
ASGCL95	Aquatic Science Champion Growth LARGE	9.5kg



AQUATIC SCIENCE

WHEAT GERM FLOATING

The highly digestible,
year-round koi food

- ✓ IMMUNITY
- ✓ DIGESTIBILITY
- ✓ 100% FLOATING
- ✓ YEAR-ROUND

100%

FLOATING

0%

SINKING

MIN. 5°C



Wheat Germ Floating by Aquatic Science is a highly nutritious, easily assimilated complete food for ornamental fish. It is specially adapted for winter preparation or recovery, but can also be used year-round. Use between 5 and 15°C to guarantee the necessary energy supply for koi and other pond fish. These are 100% floating granules.

INSTRUCTIONS

It is preferable to feed several small meals a day. Contains fish meal. Do not feed to ruminants or any other animal species.

COMPOSITION

Cereal products and by-products, oilseed products and by-products, fish meal, fish oil, seaweed, minerals.

Vitamin A (E672)	min. 8000 UI/kg
Vitamin D3 (E671)	min. 1400 UI/kg
Vitamin E (3a700)	min. 160 mg/kg
Vitamin C (3a312)	min. 150 mg/kg

Crude protein	32%
Crude	9%
Crude cellulose	4.4%
Min.eral materials	8.4%
Calcium	1%
Total phosphorus	0.9%
Sodium	0.13%

Packaging

REF.	ARTICLE	
ASWGFS2	Aquatic Science Wheat Germ Floating SMALL	2kg
ASWGFS5	Aquatic Science Wheat Germ Floating SMALL	5kg
ASWGFM05	Aquatic Science Wheat Germ Floating MEDIUM	0.5kg
ASWGFM2	Aquatic Science Wheat Germ Floating MEDIUM	2kg
ASWGFM5	Aquatic Science Wheat Germ Floating MEDIUM	5kg
ASWGFM95	Aquatic Science Wheat Germ Floating MEDIUM	9.5kg
ASWGFL2	Aquatic Science Wheat Germ Floating LARGE	2kg
ASWGFL5	Aquatic Science Wheat Germ Floating LARGE	5kg
ASWGFL95	Aquatic Science Wheat Germ Floating LARGE	9.5kg



Highly digestible
koi food for cold seasons

WHEAT GERM SINKING



- ✓ IMMUNITY
- ✓ DIGESTIBILITY
- ✓ 100% SINKING
- ✓ COLD SEASONS

0%
FLOATING
100%
SINKING

MIN. 5°C



Aquatic Science Wheat Germ Sinking is a highly nutritious, easily assimilated complete food for ornamental fish. It is specially adapted for winter preparation or recovery and for harsh climates. Use between 5 and 15°C to guarantee the energy intake needed by koi and other pond fish at this delicate time of year. These are 100% sinking granules.

Vitamin A (E672)	min. 8000 UI/kg
Vitamin D3 (E671)	min. 1400 UI/kg
Vitamin E (3a700)	min.160 mg/kg
Vitamin C (3a312)	min. 150 mg/kg

Crude protein	32%
Crude	9%
Crude cellulose	4.5%
Min.eral materials	8.5%
Calcium	1%
Total phosphorus	0.99%
Sodium	0.13%

Packaging

REF.	ARTICLE	
ASWGSS2	Aquatic Science Wheat Germ Sinking SMALL	2kg
ASWGSS5	Aquatic Science Wheat Germ Sinking SMALL	5kg
ASWGSM05	Aquatic Science Wheat Germ Sinking MEDIUM	0.5kg
ASWGSM2	Aquatic Science Wheat Germ Sinking MEDIUM	2kg
ASWGSM5	Aquatic Science Wheat Germ Sinking MEDIUM	5kg
ASWGSM95	Aquatic Science Wheat Germ Sinking MEDIUM	9.5kg
ASWGSL2	Aquatic Science Wheat Germ Sinking LARGE	2kg
ASWGSL5	Aquatic Science Wheat Germ Sinking LARGE	5 g
ASWGSL95	Aquatic Science Wheat Germ Sinking LARGE	9.5kg

INSTRUCTIONS

It is preferable to feed several small meals a day. Contains fish meal. Do not feed to ruminants or any other animal species.

COMPOSITION

Cereal products and by-products, oilseed products and by-products, fish meal, fish oil, seaweed, minerals.

AQUATIC SCIENCE

SINKING

Complete sturgeon food

- ✓ IMMUNITY
- ✓ DIGESTIBILITY
- ✓ PROTEINS



Aquatic Science Sinking is a complete food for carnivorous or bottom-feeding fish in cold water (sturgeon, barbel, tench, dace, etc.). It sinks quickly and remains very stable in the water. Its protein/lipid balance is specially developed for detritivorous and carnivorous fish. Aquatic Science Sinking is rich in energy, vitamins and trace elements.

INSTRUCTIONS

It is preferable to feed several small meals a day. Contains fish meal. Do not feed to ruminants or any other animal species.

COMPOSITION

Cereal products and by-products, oilseed products and by-products, fish meal, fish oil, minerals.



Vitamin A (E672)	min. 12000 UI/kg
Vitamin D3 (E671)	min. 21000 UI/kg
Vitamin E (3a700)	min. 340 mg/kg
Vitamin C (3a312)	min. 525 mg/kg

Crude protein	47%
Crude	13%
Crude cellulose	2.1%
Min.eral materials	10.9%
Calcium	2.4%
Total phosphorus	1.6%
Sodium	0.5%

Packaging

REF.	ARTICLE	
ASSKM05	Aquatic Science Sinking MEDIUM	0.5kg
ASSKM2	Aquatic Science Sinking MEDIUM	2kg
ASSKM5	Aquatic Science Sinking MEDIUM	5kg
ASSKM95	Aquatic Science Sinking MEDIUM	9.5kg





Sales Team



Benjamin Chauvet

Key Account Manager

pour le Nord-Ouest de la France,
la Wallonie et l'Espagne et le Portugal.

+ 33 (0) 6 03 84 83 14

benjamin.chauvet@aquatic-science.com



Thomas Cellier

Sales Manager

pour l'Est et le Sud de la France,
le Luxembourg, la Suisse et les DOM-TOM

+ 33 (0) 6 29 15 69 13

thomas.cellier@aquatic-science.com



Jean-Lou Barbette

CEO

Sales and Marketing Director

+ 32 (0) 478 24 79 49

jeanlou.barbette@aquatic-science.com

Ania Dudzinska

Customer Support & Logistics

+32 (0) 4 240 41 51

ania.dudzinska@aquatic-science.com

Denise Immers

Billing

+32 (0) 4 240 41 51

invoices@aquatic-science.com





Measuring tools for water parameters



Water treatment products



Food for ornamental fish



AQUATIC SCIENCE

www.aquatic-science.com

Rue des Biolleux 8 - 4800 Verviers (BE)

+32 4 240 41 51